

NEW BEITH

# WORKS NOTICE

October 2010



Logan Water  
Alliance

## Construction of a 20ML water reservoir, access road and associated infrastructure will commence in New Beith in November 2010



This project, funded by Allconnex Water and delivered by Logan Water Alliance, is the first stage of an overall plan to construct several water reservoirs in Logan district's south-west corner. Construction of the first reservoir will significantly increase water storage capacity for the growing residential areas of New Beith and Flagstone.

### Activities

During the construction period, a 20ML water reservoir, a one-lane bitumen access road and associated infrastructure will be built on Allconnex Water-owned land in New Beith (refer to map overleaf).

A large diameter water pipeline will also be installed along a 3.5km section of New Beith Road. Some additional pipework will be constructed to allow for future connections to planned reservoirs in New Beith and Flagstone.

Construction activities will involve vegetation removal on the reservoir site and along pipeline alignments, major excavation and earthworks, reservoir construction and pipe laying works using open trench construction methods.

### Location

The new water reservoir will be constructed on 1.3-hectares of undeveloped land off New Beith Road. A bitumen access road between New Beith Road and the reservoir site will also be constructed.

There will be construction activities along a section of New Beith Road between the New Beith Forest Estate and the reservoir site.

### Timing

Work is scheduled to begin in November 2010 and is expected to be completed in early 2012, weather and construction conditions permitting.

### What to expect

Logan Water Alliance will make every effort to minimise disruption to the community and the environment during the construction period.

All works will be undertaken in accordance with relevant safety, communication and environmental management plans.

Due to the nature of works, some localised impacts may be experienced from time-to-time including:

- Increased levels of noise, dust and vibration during site clearing, excavation and earthworks, pipe laying and other general construction activities.
- Temporary traffic changes including partial lane closures and reduced speed limits along New Beith Road during construction.
- Frequent truck movements to and from the work sites to deliver pipes, concrete and equipment, and to remove excavated material.
- A number of trees and some vegetation will be removed on the reservoir site, access road, and along New Beith Road to make way for construction.

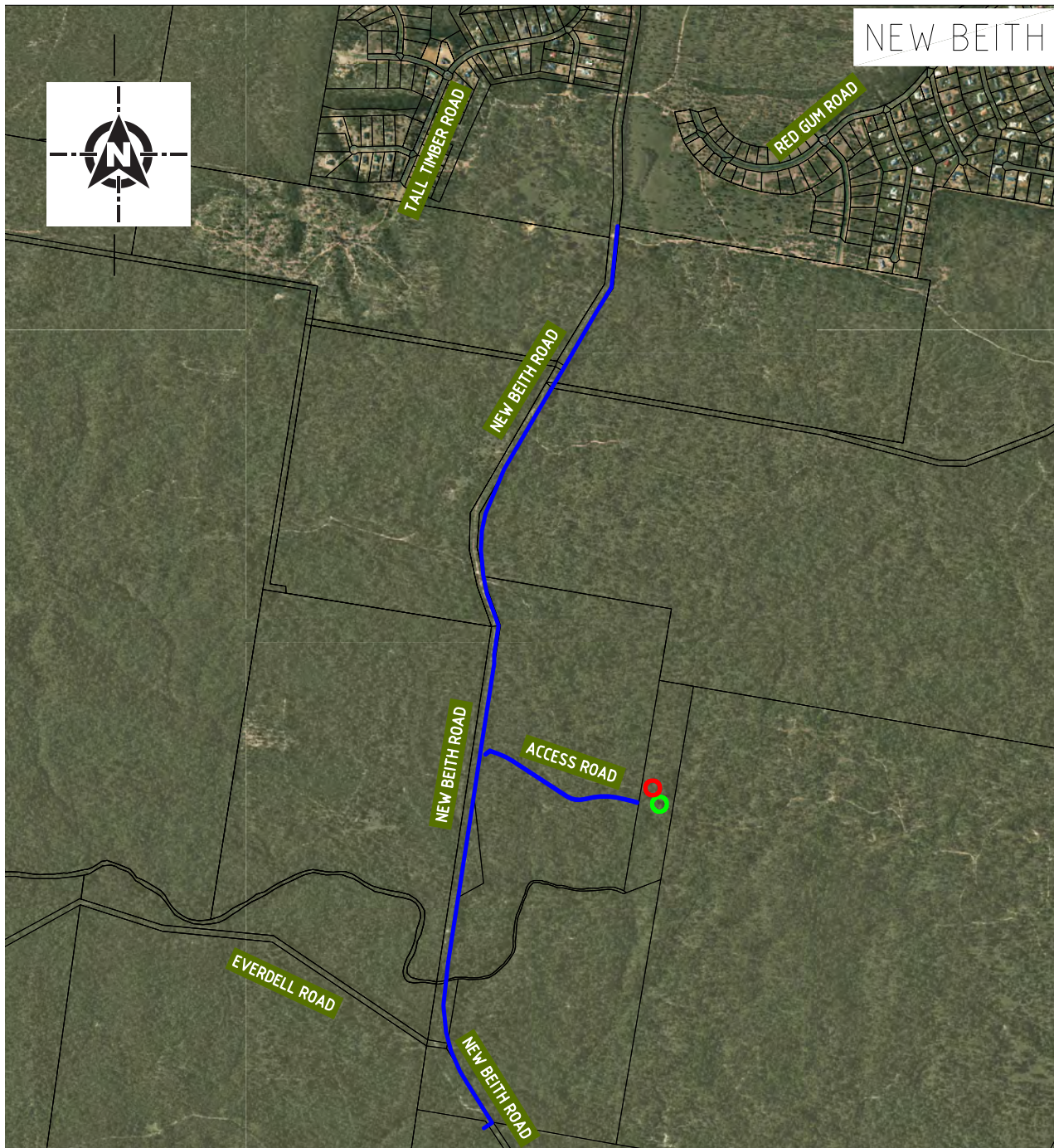
Logan Water Alliance will undertake all vegetation removal in accordance with State Government requirements.




Once each section of work is complete, the land profile will be reinstated and natural regeneration encouraged. Replanting or ecosystem rehabilitation will be undertaken off site by Logan Water Alliance to offset vegetation removal.

- Construction will generally occur between the hours of 6.30am and 6.30pm Monday to Saturday. To conduct particular activities, such as major concrete pours, some night works may be required. Affected residents will be notified prior to the commencement of any night works.

Logan Water Alliance thanks you for your cooperation and apologises for any inconvenience you may experience as a result of works being undertaken in your area.

## New Beith works zone



- LEGEND:**
-  New 20ML water reservoir
  -  Site of future 20ML water reservoir
  -  New water pipes

**For more information please contact Allconnex Water:**

**Mail:** PO Box 8042, Gold Coast MC 9726  
**Phone:** 1300 000 928  
**Fax:** 07 3412 3444  
**Email:** [info@allconnex.com.au](mailto:info@allconnex.com.au)  
**Web:** [www.allconnex.com.au](http://www.allconnex.com.au)



**Logan Water  
Alliance**